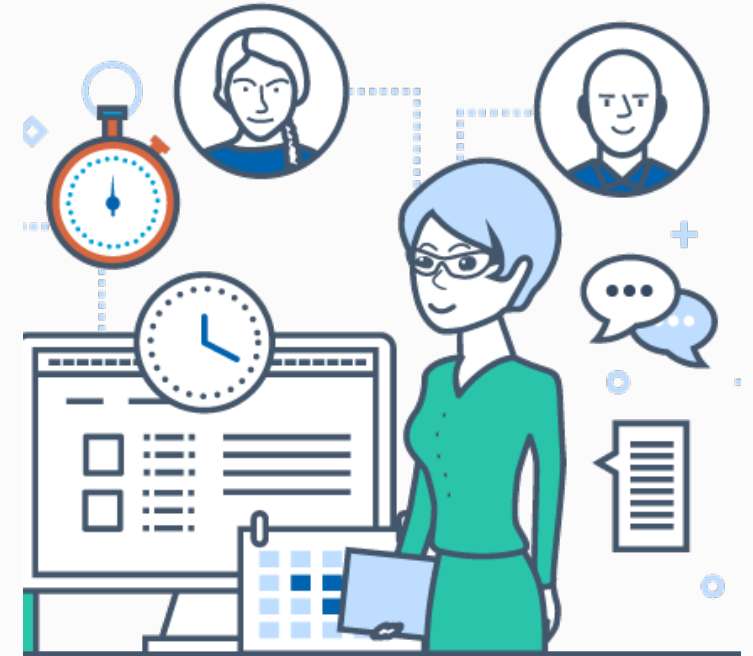


Transforming Research Support programme

RGUG update
9 October

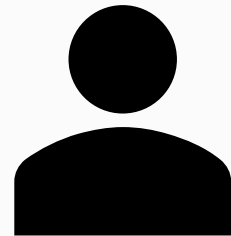
Current focus: Worktribe post-award module

- We're working on connecting Worktribe with CUFS to automate finance processes.
- The integration will happen in three stages:
 - Quick award activation in CUFS – helps Research Office colleagues
 - Automating virements, extensions, supplements, adjustments
 - Pulling actual spend data back into Worktribe
- Department impact will be minimal compared to pre-award/contracts. Research Office colleagues will see more significant changes initially.
- Features will be visible to all, even if not fully integrated yet.
- Existing permissions/approvals remain – department approval still required.



“It’s a real shame to hear that the post-award module is delayed. The pre-award and contracts modules are working so well, we were really looking forward to having the same benefits in departments for post-award.

It is good to hear that things like forecasting on Dashboard are being thought about, though.”



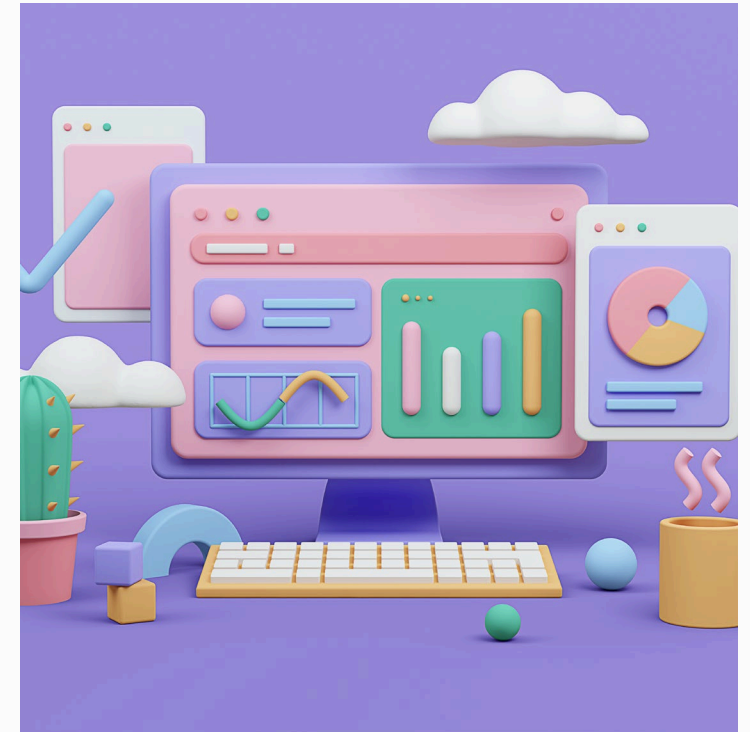
Why it's taking time (and thank you for your patience)

- We've built the first stage integration and done early testing. Now we're moving through:
 - End-to-end testing (making sure it all works together)
 - User testing (with volunteers from research and finance)
- Some technical work needs finishing.
- We're waiting on development team capacity — this is outside our control, but essential to make sure the system is properly supported once it's live.
- Aiming to be implementation-ready by the end of the year, but we'll only launch when we're confident it's stable and sustainable.



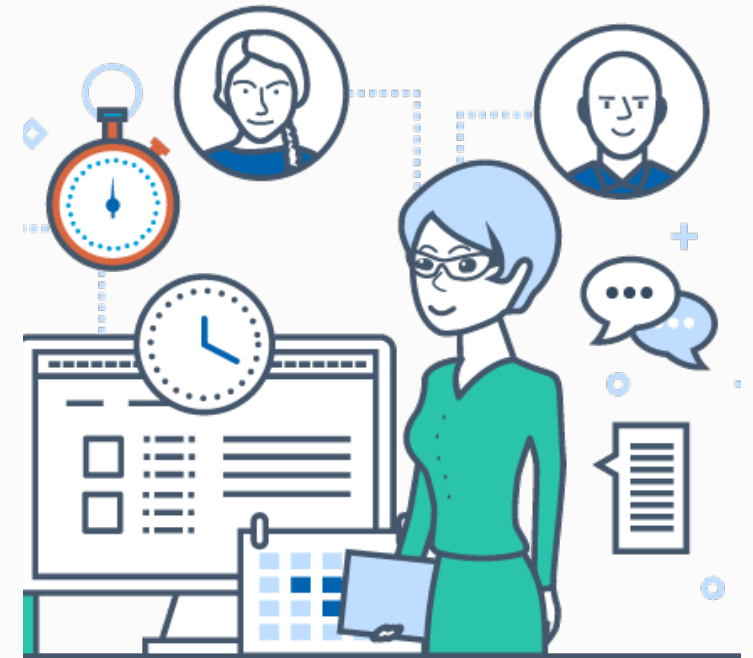
Current focus: Financial reporting discovery

- 8-week discovery project to understand post-award reporting needs across systems (Worktribe, Oracle Fusion).
- Needed now to inform future integration decisions.
- Expanding on earlier work, Finance needs clear evidence before committing to build.
- Thanks to everyone who's volunteered for interviews — your input is shaping what comes next. We'll keep you updated as the project progresses.



Current focus: Research Dashboard development

- Research Grants Expenditure Application (RGEA) retiring – doesn't meet cybersecurity standards.
- Research Dashboard will continue and take on key RGEA functions.
- A minimum viable product is in progress with small, user-driven improvements.
- Early updates: new Project section, redesigned Grants, data export.
- Engaging users to shape future development.
- Exploring wider Research Dashboard access without delegation model.



Supporting you through change

- We know post-award teams in the Research Office are under pressure.
- Worktribe won't replace CMS overnight – it's extra work now.
- But it's part of building better, joined-up systems.
- Departments will see less impact – Research Office is carrying the load.
- Testing and consultation are about getting it right.
- We're committed to listening, supporting, and improving.
- Thank you for your resilience – it will be worth it.



Looking ahead: TRS extended to 2028

- Our longer-term projects include improvements to:
 - Ethics
 - Due diligence
 - Timesheets
- Worktribe offers modules for these, but we're not jumping in just yet.
- We'll take time to understand what users need and choose the best solution (whether that's Worktribe, something custom, or another supplier).



Any questions?

Keep in touch:



Follow TRS and Using Worktribe Sharepoint

Email us at



transformingresearchsupport@admin.cam.ac.uk